



APPENDIX A: Project Maps and Figures

Prepared for:



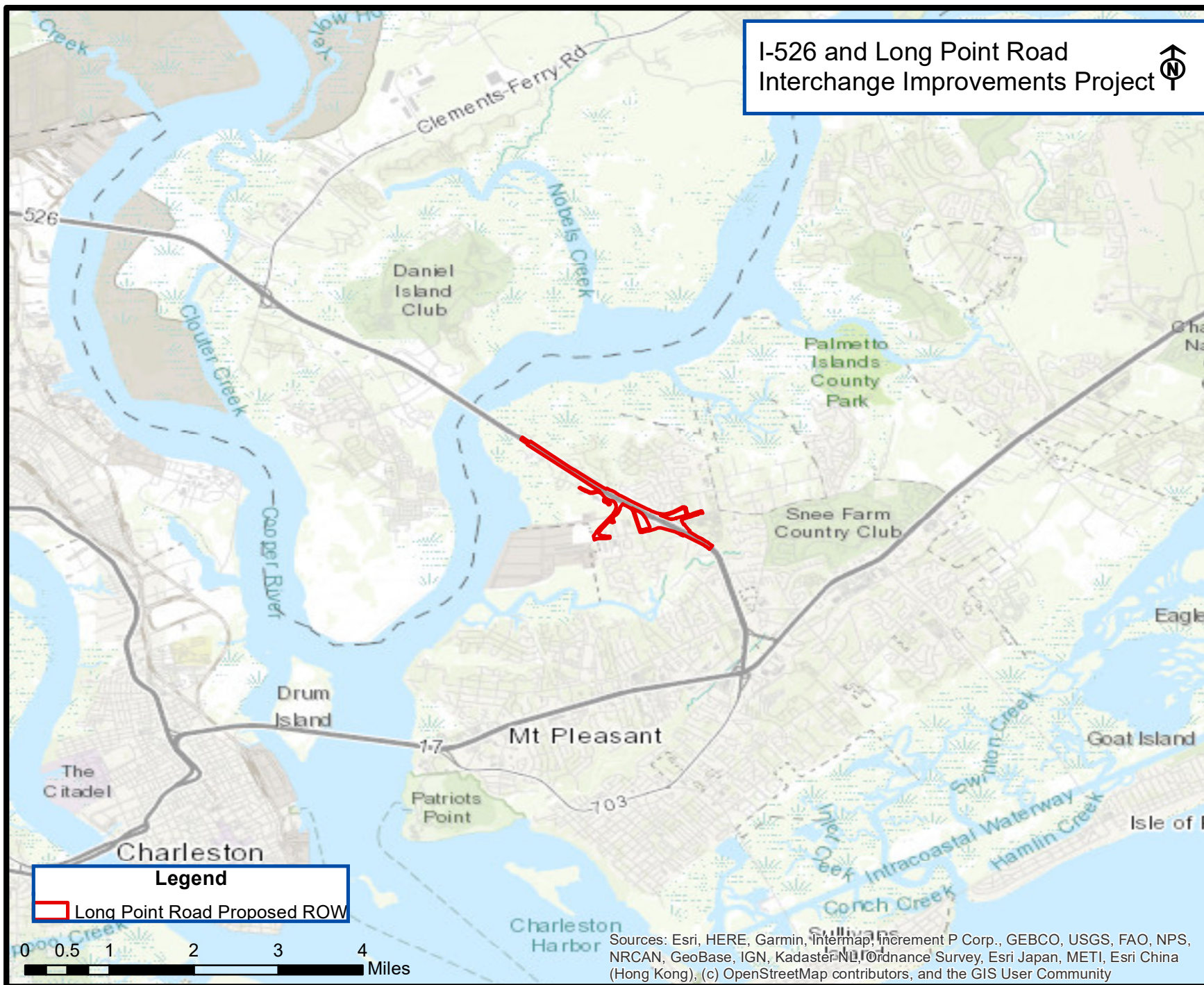
Prepared by:



TABLE OF CONTENTS

- 1.0 Preferred Alternative Overview Map**
- 2.0 Preferred Alternative Detailed Map**
- 3.0 Preferred Alternative Cross Sections**

I-526 and Long Point Road Interchange Improvements Project



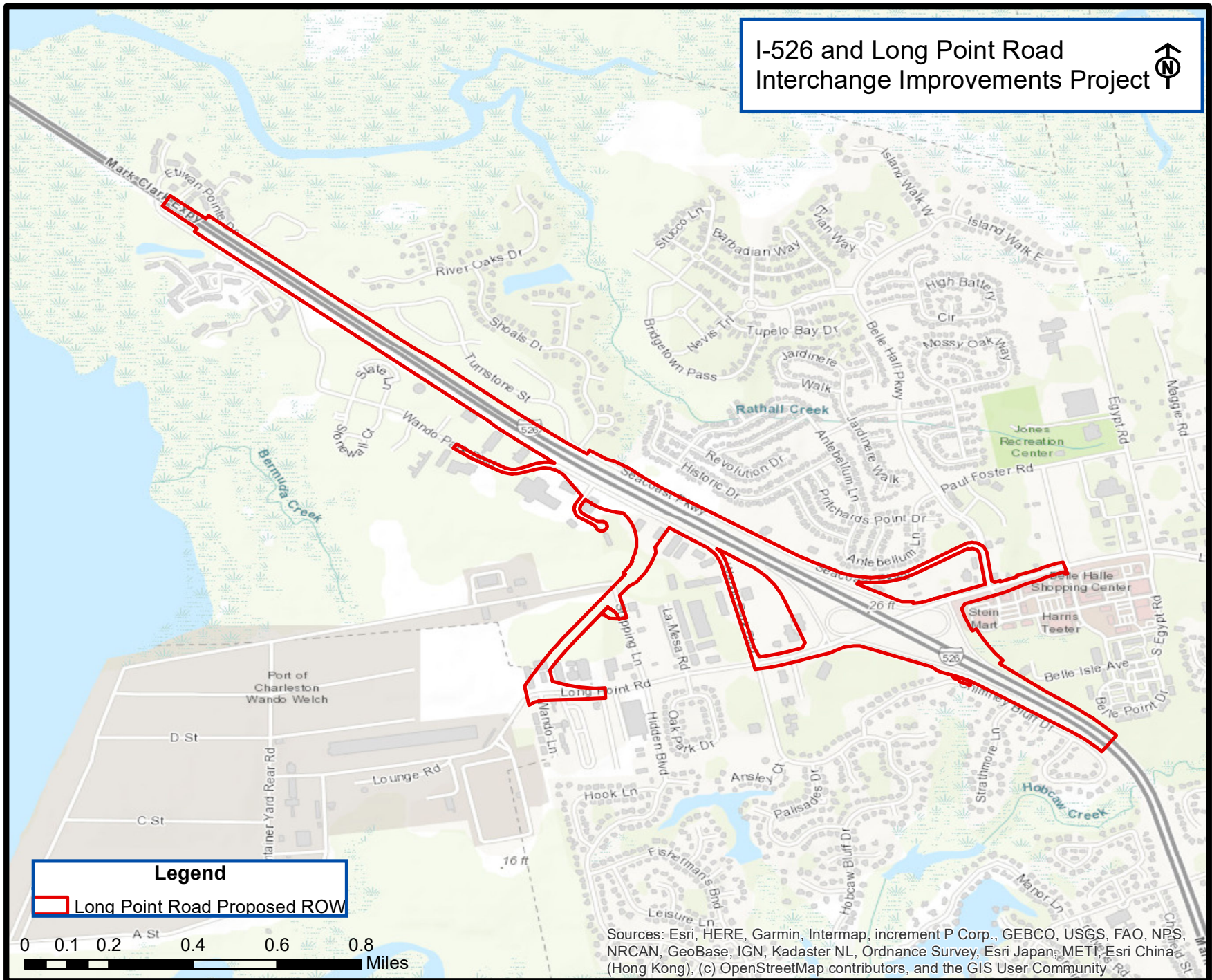
Legend

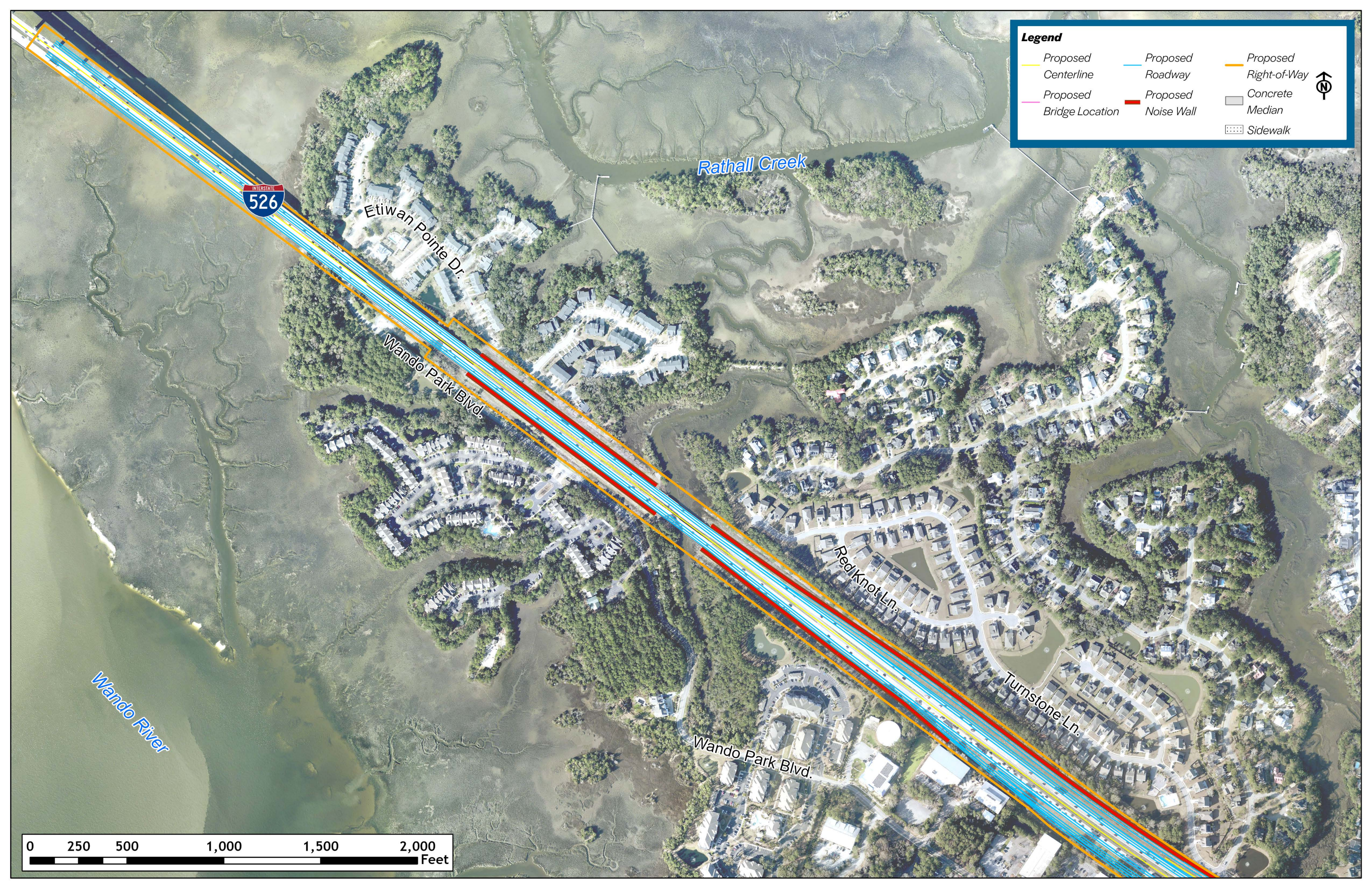
Long Point Road Proposed ROW

0 0.5 1 2 3 4 Miles

Sources: Esri, HERE, Garmin, Intermap, increment P Corp., GEBCO, USGS, FAO, NPS, NRCAN, GeoBase, IGN, Kadaster NL, Ordnance Survey, Esri Japan, METI, Esri China (Hong Kong), (c) OpenStreetMap contributors, and the GIS User Community


I-526 and Long Point Road Interchange Improvements Project





Legend

Proposed Centerline	Proposed Roadway	Proposed Right-of-Way
Proposed Bridge Location	Proposed Noise Wall	Concrete Median
		Sidewalk



Legend

Proposed Centerline	Proposed Roadway	Proposed Right-of-Way
Proposed Bridge Location	Proposed Noise Wall	Concrete Median
		Sidewalk

North Arrow

